



Kyocera FS-1128MFP

30 PPM Monochrome
Print • Copy • Scan • Fax



Reliability.....	Excellent
Multitasking.....	Good
Administrative Utilities	Very Good
Feedback to Workstations.....	Very Good
Ease of Network Setup.....	Very Good
Print Drivers.....	Good
Applications Compatibility.....	Excellent
Scan Functions.....	Good
Print/Copy Quality	Good
Print/Copy Productivity.....	Very Good
Ease of Use.....	Very Good
Feature Set.....	Very Good
Security Features.....	Not Rated
Environmental Features	Not Rated
Toner Yield.....	Very Good
Cost per Page	0.951¢
Value	Very Good

BLI RECOMMENDATION

With a robust design suitable for numerous environments, the 30-ppm Kyocera FS-1128MFP, which gave a good overall performance in BLI's two-month lab evaluation, proved highly reliable. Providing standard print, copy, scan and fax functionality, this device, which has a low cost per page, comes equipped with an RADF and a USB port that allows for direct printing of files from a flash drive. Exhibiting above average ease of use, the unit is easy to manage using KMnet Viewer, which can assign specific alerts to different recipients, while the Kyocera Command Center provides users with a very good level of detail about device status, paper size, approximate percentage of paper remaining and toner supplies. Output produced by the FS-1128MFP was good overall, with crisp and cleanly formed text and above-average production of closely spaced fine lines. BLI highly recommends the Kyocera FS-1128MFP for large workgroups with monthly print volumes of up to 3,000 impressions.

Test duration:

Two months, including a 10,000-impression durability test.

Maximum monthly duty cycle¹:

Up to 20,000 impressions.

Manufacturer's recommended monthly volume:

Up to 20,000 impressions.

BLI's recommended monthly volume for optimum performance:

Up to 3,000 impressions.

More information on the Kyocera FS-1128MFP is available through bliQ (www.buyerslab.com/bliQ).

¹ The maximum monthly duty cycle is the maximum volume, as specified by the vendor, that the unit is capable of producing in a month; however, it is not recommended that the unit be run at this volume on a regular basis.

STRENGTHS

- Highly reliable
- Far and away the lowest supplies cost per page
- First-page time from energy-save mode is faster than average; above average print and copy efficiency with the PCL and PostScript drivers
- KMnet Viewer provides alerts to different recipients for specific events, either on a device-by-device basis or for an entire group of devices
- Kyocera Command Center provides users with detailed information
- Kyocera's PRESCRIBE page design and control language lets users create graphics, logos and forms independently of the system, and save and update on the unit
- Pop-up messages, icons and audible alerts keep users well informed about device status and error conditions
- Accommodates above-average paper weights through the bypass tray
- RAM Disk feature allocates a portion of RAM for form printing, storage and secure entry
- Above average standard and maximum memory capacities
- USB port on control panel allows users to print files from a flash drive
- Standard security features include IPsec, SSL/TLS, SNMPv3, IPv4 and IPv6 support

WEAKNESSES

- Higher than average purchase price (suggested retail price)
- Above average amount of banding and some graininess visible throughout the halftone pattern in both print and copy modes
- Control panel is positioned at an awkward angle and cannot be tilted

TEST RESULTS AND OBSERVATIONS

+, – and ○ represent positive, negative and neutral attributes, respectively.



RELIABILITY

EXCELLENT

- + The Kyocera FS-1128MFP is certified highly reliable by BLI, completing a 10,000-impression durability test with just two misfeeds for a misfeed rate of 1 per 5,000 impressions and no service calls required.
- + The longlife OPC (organic photoconductor) drum is guaranteed for 100,000 impressions or three years, which far exceeds the life of all competitive devices, and is considered more environmentally friendly as it uses non-hazardous raw materials.
- + The developer and fuser units are also rated for 100,000 impressions and all come as part of the device maintenance kit.

PMs/Malfunctions	Service Required	Meter Count (Impressions)	Impressions Between Service
Meter count (beginning of test)		0	
End of test period		10,000	
Total misfeeds/misfeed rate	2/1 per 5,000 impressions		
Total Service Calls	0		



MULTITASKING

GOOD

- + The unit has good multitasking capabilities overall, with no delay between jobs.
- + The number of print jobs that can be sent to the unit is limited only by memory, with jobs residing on the device rather than being fed one at a time over the network as is common with devices in this class.
- + The number of copy jobs that can be programmed ahead while a copy or print job is in progress is limited only by memory capacity; some devices enable users to reserve fewer jobs.
- Programming of the next copy job can begin as soon as all the pages of the current copy job have been scanned.
- The device automatically clears the settings when a user places documents in the feeder and does not require users to press any keys.

○ Faxes can be sent while the device is printing. Fax receptions will be held in memory until print jobs are complete.

Multitasking Evaluation

Primary Function	Secondary Function	PRINT	SCAN	COPY
PRINT		Yes	Yes	Yes
SCAN		Yes	1	1
COPY		Yes	Yes	Yes

1 As soon as document feeder was free, the primary job was already complete. (2)

NOTE: A “Yes” indicates that the user can initiate the secondary function while the primary function is taking place and that no further user intervention will be required for the secondary function to take place.



ADMINISTRATIVE UTILITIES

VERY GOOD

- + Kyocera’s administrative utility suite includes KMnet Viewer, Printer Status Monitor and Kyocera Command Center, the embedded Web page.
- + KMnet Admin is a unified solution for network device management for both Kyocera and competitive network printing devices. The utility allows the administrator to view page counts and device status and view and configure alerts for groups of output devices on the network. Administrators can also access detailed information on individual devices such as amount of toner remaining, configuration settings and event logs.
- + KMnet Viewer enables device discovery and management of all printers and MFPs on the network, including Kyocera and non-Kyocera models. The utility allows administrators to sort devices by name or IP address and specify which information on monitored devices is shown.
- + An office map can be downloaded and each device can be dragged and dropped to its specific location, allowing for faster navigation for technical support.
- + Kyocera Command Center, the embedded Web page, provides administrators with information about the FS-1128MFP and lets them handle administrative tasks such as changing device settings, viewing device status and monitoring toner and paper supplies.
- + The embedded Web page allows administrators to send e-mail alerts to three recipients for error conditions, including paper jam, cover open and add toner/paper.
- + KMnet Viewer allows administrators to create groups of products based on reporting or error notification requirements.
- + Within a “report group” on KMnet Viewer, an administrator can receive e-mail reports outlining a wide variety of device statistics, including printed page volumes and consumable levels, at defined time intervals.

- + The embedded Web page allows for direct printing of PDF files, without requiring the application. Also included is a software utility that enables direct printing of PDF, PostScript, PRN and Kyocera's PRESCRIBE files without having the respective applications installed on the PC. With this utility users can send multiple files at one time and change settings such as quantity, duplexing, N-up printing and resolution.



FEEDBACK TO WORKSTATIONS

VERY GOOD

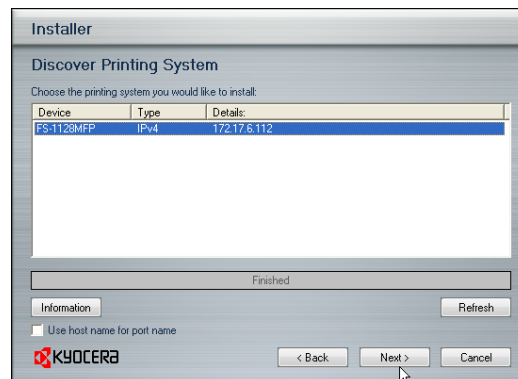
- + The Kyocera Command Center provides users with a very good level of detail regarding the FS-1128MFP, including device status, paper size, remaining paper and toner supplies.
- The pop-up status monitor provides a link to the Kyocera Command Center as well as a color-coded icon that resides on the Windows toolbar and an audible alert for events such as cover open, paper jam, add paper/toner and printing/print completed.
- + KMnet Viewer allows administrators to assign specific alerts or events to different recipients, either on a device-by-device basis or for an entire group of devices.
- Each alert must be set up separately, which is more time consuming than setting up alerts in a group.



EASE OF NETWORK SETUP

VERY GOOD

- + Two people can easily lift the Kyocera FS-1128MFP out of its box, which does not use excessive packaging, allowing users to be up and running in a few minutes.
- + Installation of the drivers is highly automated. The CD-ROM, which contains all of the drivers, auto-launches upon insertion into the drive. When selected, the install software option launches a menu-driven installation routine.



Driver Installation

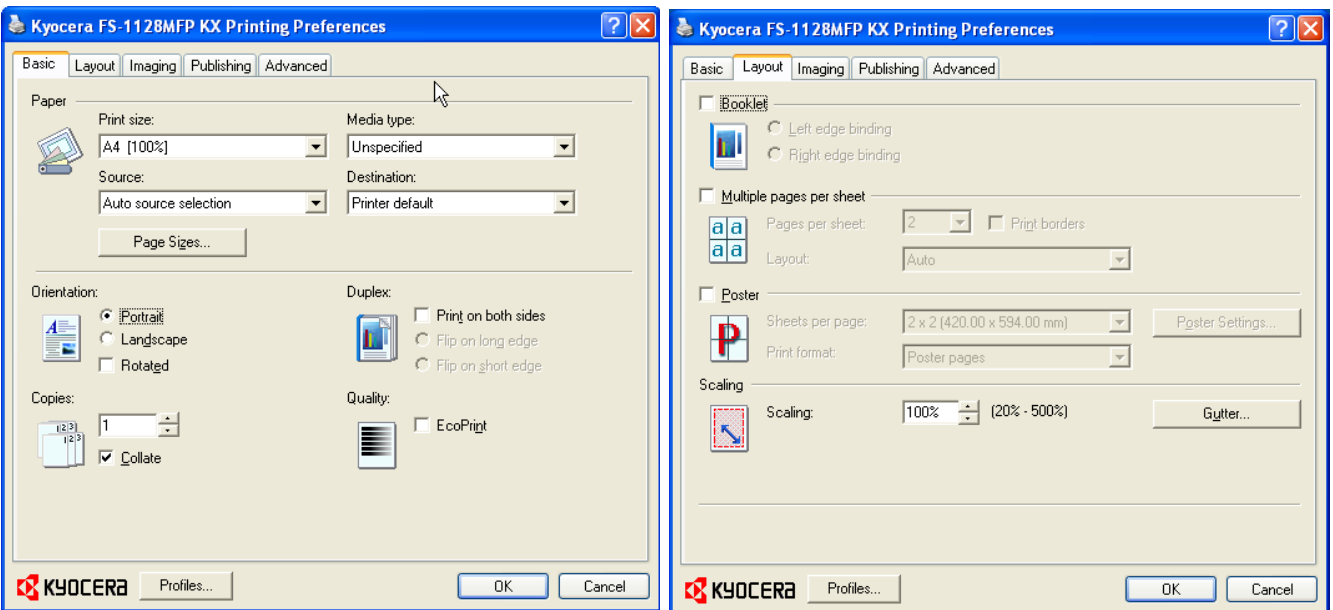
- + The IP address is automatically assigned using DHCP. In addition, the port is created automatically during installation of the drivers. The installation of all three drivers required only 10 clicks of the mouse
- Administrators can't clone device settings from one device to another, and they can't simultaneously install the drivers at multiple workstations on the network. Kyocera advises that SMS packages can be prepared on request for tender customers, facilitating fleet distribution and setup of drivers across the network.



PRINT DRIVERS

GOOD

- The Kyocera FS-1128MFP ships with Kyocera's KX print driver for Windows 98, NT 4.0, XP and Vista operating systems, as well as Mac OS X. Other supported environments include Novell NPDS and Linux. The KX driver combines three drivers in one: PCL XL (PCL 6 emulation), PCL 5e and KPDLL (the company's PostScript emulation). The KX driver facilitates a more streamlined installation procedure than installing multiple drivers and uses fewer resources on the network.



KX print driver – Basic Tab and KX print driver – Layout Tab

- + All the features used for typical print jobs are accessible on the main screen, eliminating the need to navigate multiple tabs.
- + The layout of the PCL and PostScript drivers is the same, which makes use easier for those who switch between them. The drivers offer a good feature set, including booklet printing, collation, N-up printing and custom watermarks.

- It should be noted that users cannot switch between emulations from within applications. Users have to close or minimize the application and then open the driver properties screen to switch from one driver to the other. Kyocera recommends that customers who regularly need to switch between the emulations install the driver twice with different configuration settings--one for PCL and one for the KPD L for PostScript emulation.
- + The well-designed drivers are graphical and include a summary list of features and a graphical display which indicates which paper trays to use, or can also be used to view different document types.
- + File size remained the same when printing multiple sets, regardless of whether “collate” was selected from the properties screen of the driver or from the print screen within an application.
- + The PCL XL and KPD L drivers feature PRESCRIBE—Kyocera’s page design and control language—that enables graphics, logos and forms, including multi-part forms, to be created independently of the system and saved and updated on the unit.

Kyocera FS-1128MFP PRINT DRIVER FEATURES

Features	PCL XL	PostScript
Auto Feature/Device Detection	Yes	Yes
Booklet Printing	Yes (no folding, no stapling)	Yes (no folding, no stapling)
Collate Sets	Yes	Yes
Max Paper Sources per Job	5	5
Mirror Image	No	Yes
Negative Image	No	Yes
N-up Printing	2 to 25	2 to 25
Overlays	No	No
Paper Gauge	No	No
Print and Hold	Yes	Yes
Proof Print	Yes	Yes
Quantity Selection	Up to 999	Up to 999
Reduction/Enlargement	20% to 500%	20% to 500%
Resolution Modes (dpi)	300 x 300; 600 x 600; 1200 x 1200	300 x 300; 600 x 600; 1200 x 1200
Save Settings	Yes	Yes
Secure Print	Yes	Yes
Watermarks/Custom Watermarks	Yes/Yes	Yes/Yes

Send once/print many:

File size remained the same when printing multiple sets, regardless of whether “collate” was selected from the properties screen of the driver or from the print screen within an application. Output was properly collated.



APPLICATIONS COMPATIBILITY

EXCELLENT

+ No problems were experienced with any of the test files used in the applications compatibility tests. Units are tested for compatibility on the Windows XP platform with Microsoft Word 2000, Microsoft PowerPoint 2000, Microsoft Excel 2000, Adobe PageMaker 7.0, Adobe Photoshop 6.0 and Adobe Acrobat 8.0 using 25 application test files, which contain text, graphics, halftone images, tables, etc., enabling BLI technicians to evaluate memory usage, file processing, font rendering and grayscale capability.



SCAN FUNCTIONS

GOOD

+ Like most competitive models, the FS-1128MFP offers color scanning via network or USB standard, with a maximum resolution of 600 x 600 dpi and a rated speed of 7 ipm in color and 20 ipm in monochrome.

○ The device, which supports LDAP, allows users to scan to e-mail, FTP and SMB. File formats supported include TIFF, PDF and JPEG.

– BLI technicians noted that entering e-mail addresses via the alphanumeric keypad was a more cumbersome process than with some rival models. The keyboard's awkward angle made this process more difficult.

○ The scan driver is TWAIN compliant.



PRINT/COPY QUALITY

GOOD

+ Text in print mode, which was rated good, was characterized by cleanly formed characters, with average darkness and sharpness. An above average amount of toner overspray and a minimal amount of haloining was visible, but only when output was viewed under magnification. Line art produced by the FS-1128MFP was also good overall; vertical and horizontal lines were smooth, and diagonal lines showed no stair-stepping; closely spaced fine lines remained distinct but line weight consistency was slightly below average. No haloining or toner overspray was visible in a visual examination, though a minimal amount of haloining and an above average amount of overspray was visible when output was viewed under magnification. Solids in print mode were also good, with smooth, dark fill areas, consistent toner coverage and average density readings.

○ Halftones were visible over a good range, from the 2 to 97 percent dot-fill levels; however, distinct transitions were not visible at the higher end of the scale.

- Toner coverage within dot-fill areas showed an above average amount of banding along the short edge, and cell formation was visible across multiple shades of the halftone pattern, which was rated only fair.
- + In copy mode text was rated good, with above average smoothness of curves, serifs and lines, and average darkness and sharpness. An average amount of toner overspray and a minimal amount of haloing was visible, but only when output was viewed under magnification. Line art produced by the FS-1128MFP was also good overall; vertical and horizontal lines were smooth, and diagonal lines showed no stair-stepping; closely spaced fine lines remained distinct but line weight consistency was below average. A minimal amount of haloing and an average amount of overspray was visible, but only when output was viewed under magnification.
- Solids in copy mode were rated only fair, with below average boldness and consistency of coverage and average density readings.
- Halftones in copy mode, which were rated good, were visible over a good range (from the 10 to 100 percent dot-fill levels), with distinct separations between all levels.
- Halftone pattern was rated fair because toner coverage within dot-fill areas showed a minimal amount of banding and some graininess.

Print Quality

Text	Good
Line Art	Good
Halftone Pattern	Fair
Halftone Range	Good
Solids	Good

Copy Quality

Text	Very Good
Line Art	Very Good
Halftone Pattern	Fair
Halftone Range	Good
Solids	Fair

Black print density

Print density for the Kyocera FS-1128MFP	Density for units in this class tested to date:
1.29 to 1.31	1.15 to 1.55

Black copy density

Copy density for the Kyocera FS-1128MFP	Density of original:
1.24 to 1.27	1.62 to 1.68

Halftone range

	Visible halftone range
Kyocera FS-1128MFP	2% to 97%
Typical range for competitive units	3% to 93%

The printed halftone test target consists of blocks of increasing dot-fill levels (1% to 100% in 1% increments).



PRINT/COPY PRODUCTIVITY

VERY GOOD

- When printing multiple sets of a 10-page document from the PCL driver, the FS-1128MFP’s overall simplex print efficiency is above average for comparable models in this speed range tested to date, while its duplex speed is competitive.
- + First-print times for all five file types used in testing (Word, PowerPoint, TIFF, PDF and JPEG) are competitive to faster than average when compared to those of comparable models tested.
- + First-page time from energy-save mode is faster than average.
- + When using the PCL driver to print BLI’s job stream, which simulates that type of traffic experienced in a multi-user environment, the unit’s productivity is above the average for comparable monochrome printers tested. Performance from the Post-Script driver is competitive.
- When producing multiple sets in copy mode, the FS-1128MFP’s efficiency is well above average in 1:1 mode, and competitive in 1:2 and 2:2 modes.

First-Print Time from Energy-Save Mode (Seconds)

Kyocera FS-1128MFP	Average for units in this class tested to date
18.84	19.77

Device sits idle overnight; a single-page black Word document is sent to the device; first-print time indicates the time it took to RIP, image and deliver the first page of the test document to the output tray.

Tested First-Print Times (Seconds)

Windows XP	Word	PowerPoint	Photoshop	Acrobat	Photoshop
File type	Black Text	Color Graphic/Text	Color Graphic	Black Graphic/Text	Color Graphic
File extension	DOC	PPT	TIF	PDF	JPG
Pre-Raster File Size	114 KB	99 KB	20 MB	426 KB	248 KB
Post-Raster File Size	34.5KB	125 KB	597 KB	563 KB	740 KB
First-Page Time	7.12	7.94	8.38	8.31	7.56
Tested Competitive Average	11.10	11.84	24.18	14.25	21.50

The Kyocera FS-1128MFP's print speeds were tested at the default 600 dpi using the PCL XL driver. First-print time indicates the time it took to RIP an image and deliver the first page of the test document set to the output tray.

Kyocera FS-1128MFP's rated speed:
30 ppm

Job Stream

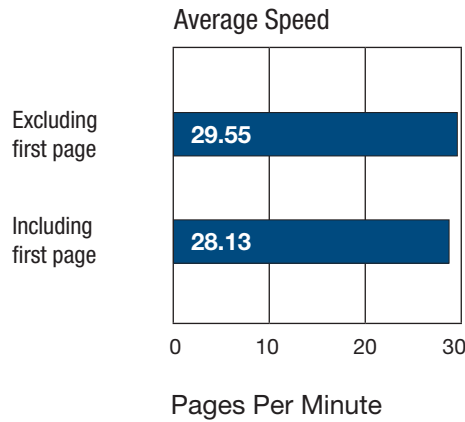
PostScript	Kyocera FS-1128MFP	COMPETITIVE AVERAGE
BLACK		
Job Stream PPM	16.5	10.0
Percent of Rated Speed	55.1	48.3

PCL	Kyocera FS-1128MFP	COMPETITIVE AVERAGE
BLACK		
Job Stream PPM	26.1	22.7
Percent of Rated Speed	87.0	76.5

BLI's job stream includes Word documents, Outlook e-mail messages, Excel spreadsheets, PowerPoint, HTML and Acrobat PDF files, totaling 19 pages. This test simulates the type of traffic a typical device might experience in a real-world, multi-user environment. All of the files are sent to the device as a group, at which time the stopwatch begins; timing ends when the last page of the last file exits the device. Job stream efficiency is determined by the percentage of the rated speed at which the device operates when producing real-world jobs. The closer the rate is to 100%, or if it exceeds 100%, the more efficient the device.

Problems encountered:
None

BLI's Tested Print Speeds



Print speed is tested using BLI's Monochrome Test Original with 6% page coverage. The test page is printed in a quantity equal to double the vendor's rated print speed for the device in each mode tested (e.g., if the vendor's rated print speed is 20 ppm, 40 pages are printed). The unit's print speeds were tested using the PCL driver.

Average Productivity

	SPEED IN PPM		PERCENT OF RATED SPEED	
	Kyocera FS-1128MFP	COMPETITIVE AVERAGE	Kyocera FS-1128MFP	COMPETITIVE AVERAGE
PRINT				
1:1	24.7	23.0	82.3	75.4
1:2	14.2	13.8	47.2	45.4
COPY				
1:1	22.0	21.3	73.4	69.7
1:2	13.3	14.3	47.5	43.5
2:2	13.1	11.1	43.5	37.0

Efficiency is tested using a 10-page full-color document and a 10-page black document. BLI obtains the overall efficiency for each mode by averaging the efficiency ratings (derived by dividing the tested speed of the device by the rated speed and then multiplying by 100) for each run length (1, 5, 10 and 20 sets). The unit's efficiency was tested using the PCL driver at 600 dpi.



EASE OF USE

VERY GOOD

+ Although it is advisable for two people to lift the device out of the box (which does not use excessive packaging), it can be easily placed on top of the optional paper drawers. Toner cartridges are pre-installed and removing the packing strips prior to using the device only takes a few minutes.

- BLI technicians found the angle of the control panel, which cannot be tilted, to be quite awkward to use when placed on a normal desktop.

- + The control panel was quite easy to navigate, with hard keys on the left for copy, scan and fax functions, and on the far left for Document Box, System Menu and Job Queue Status. Next to these keys is an array of one-touch fax keys enabling 22 one-touch numbers and 100 address book entries. A five-line monochrome LCD displays the current function, paper size selected and current status. To the right of the display are up/down/ and left/right arrow keys for menu navigation, four keys for programming copy jobs, and power and logout hard keys. Navigating the menu system was intuitive.



Kyocera FS-1128MFP Control Panel

- + Procedures for replacing toner are easy. Though it can't be replaced while the unit is running, the cartridge is accessible from the top and lifts out easily, after a lever at the side has been released.
- Although users are required to remove the toner cartridge and drum unit to access some misfeed areas, the surface of the drum is not exposed during removal.



Kyocera FS-1128MFP paper Trays.

- BLI technicians noted that loading paper trays is easy, with sliding paper guides.
- + KM-NET for Direct Printing is a user friendly utility allowing for simple submission of PDF files to the device without opening the PDF; users can choose one or multiple PDF files and submit them to the direct print workflow by dragging-and-dropping or right clicking them or by browsing. Users can also set up print profiles that further simplify the submission process and is ideal for users operating the device as a short run print-on-demand resource.



FEATURE SET

VERY GOOD

- + The unit's standard memory capacity of 256 MB is higher than that of most models in its class.
- + Maximum memory of 768 MB is also much higher than that offered by competitive units.
- + Automatic duplexing is standard, as is an RADF.
- + Color PC scanning with support for TIFF, PDF and JPEG file formats is standard.
- + Features of the unit's standard fax functionality include an ITU.T Super G3 modem with a speed of 33.6 Kbps, 22 speed dial destinations and an address book that holds up to 100 entries.
- + A RAM Disk feature that allocates a portion of RAM for form printing, job storage and secure printing can be enabled.
- + Kyocera's PRESCRIBE PDL offers custom print programming features for specialized printing.
- The FS-1128MFP offers a competitive standard paper capacity that consists of one 250-sheet drawer plus a 50-sheet multi-purpose tray.
- + The unit's maximum paper capacity of 800 sheets via two optional 250-sheet paper feed units, is above average.
- + The 50-sheet bypass tray handles up to 120 lb. index, which is heavier media than can be accommodated by most of its peers.
- + A USB port beneath the control panel allows users to print files from and scan files to a flash drive.
- + Standard security features include IPsec, SSL/TLS, SNMPv3, and IPv6 support.



SECURITY FEATURES

NOT RATED

Security Features	
Administrator password length (characters)	24
Authentication	Yes
Network user authentication	Yes
Windows	Yes
Novell NetWare NDPS	Yes
Kerberos protocol support	Yes
Authentication via department or user ID codes that are registered on the machine	Yes
Number of codes	100
Restrict usage of color	Not applicable
Restrict usage of other features	Yes
802.1x wireless authentication	Yes
Authenticated printing	Yes
Common Criteria Certification	No
Control panel lock/disablement	Yes
Digital user signature	Yes (for sending e-mail alerts)
Encrypted secure print	Yes (SSL + Private Print)
Hard drive encryption	No
Hard drive lock	INA
Hard drive overwrite	No
Max number of overwrites after every job	N/A
Overwrite method	N/A
IP address filtering	Yes (up to 10 addresses)
IPsec	Yes
Job logs (e.g., activity monitoring, compliance auditing)	Yes
MAC address filtering	Yes
Password-protected mailboxes	No
Password-protected Web page	Yes
Port disablement	Yes
Protocol disablement	Yes
Removable hard drive	No
Secure print	Std
Secure Sockets Layer (SSL)	Yes
SNMPv3 support	Yes
Third-party security features	Authorization, Accounting, Secure Pull Printing
Transport layer security	Yes
Unauthorized copy prevention (secure watermark)	Yes
USB block	Yes
Additional security features	RAM Disk feature

- + Kyocera’s RAM Disk option allows a portion of the device’s RAM to be treated like a hard disk to facilitate secure job storage without purchasing an additional hard drive; as RAM is volatile memory it can only retain data while connected to a power supply or a device.



ENVIRONMENTAL FEATURES

NOT RATED

Specified capable of running 30% post-consumer recycled paper	Yes
Specified capable of running 50% post-consumer recycled paper	Yes
Specified capable of running 100% post-consumer recycled paper	Yes
Instant/Quick Fusing	Yes
Duplexing	Yes
Toner-save mode	Yes
Energy-save mode/modes	Yes
Eco-Label Certifications	
Germany Blue Angel	Yes
ENERGY STAR	Yes
IT Eco Declaration	INA
WEEE Directive compliant	INA
RoHS compliant	Yes
Recycled materials/parts used in the product	Yes
Product designed for recycling (easily disassembled, no binding agents)	Yes
Hardware remanufacturing program for this product	No
Toner cartridge recycling program for this product	No
Pre-paid label for return of toner cartridges/bottles for this unit	No
Toner recycling system	No
Ability to program features such as duplexing and auto shut-off, over entire fleet	Yes
Polyvinyl Chloride used in any aspect of the product or its packaging	Yes
Recyclable packaging materials for the product	Yes
Recyclable packaging materials for its consumables	Yes
Packaging materials used: Corrugated Paper; Expanded Polystyrene Foam (EPS); Expanded Polypropylene Foam (EPP); LDPE (bag)	
Tested energy consumption levels of the device (in watts):	
Power	494
Standby	87
During Printing	494
Emissions output from this device for the following substances (in mg/h) (Per Blue Angel RAL UZ 122 test procedures):	
Ozone	0.69
Styrene	0.15
Benzene	0.032
TVOC (Print/Stand-by)	8.0
Dust	1.5
Other	



TONER YIELD

VERY GOOD

- + The tested toner yield of the FS-1128MFP's toner cartridge is above average for monochrome MFPs in this speed range tested to date.
- Tested impressions per gram are competitive compared to models in this class tested to date.
- + In BLI's testing, the three cartridges tested exceeded their rated yield by an average of 1,842 impressions.

Tested Toner Yield (ISO 24712)

	Black
Manufacturer's Rated Toner Yield (Impressions)	7,200
COMPETITIVE AVERAGE	6,800
BLI's Tested Yield (Impressions) ¹	9,042
COMPETITIVE AVERAGE	7,904
Net Weight (Grams)	96.1
Impressions per Gram	36.25
COMPETITIVE AVERAGE	41.96
Manufacturer's Rated Drum Yield (Impressions) ²	100,000
COMPETITIVE AVERAGE	53,667

¹ Based on BLI's testing of two high-yield print cartridges per color using the ISO 24712 toner yield test original.

² Some devices in the competitive group employ an all-in-one cartridge that includes the toner and drum in a single component. In those cases, rated toner yield is used as the rated drum yield in calculating the average.



VALUE

VERY GOOD

- The unit's suggested retail price is higher than average compared with similarly equipped legal-size monochrome laser/LED printer MFPs in this speed range and class. Note that just over half the devices in the competitive group use street pricing, which is typically lower.
- + Supplies cost per page is far and away the lowest compared with legal-size monochrome laser/LED printer MFPs in this speed range and class tested to date.

Tested Supplies Cost per Page (ISO 19752)

Toner Cost per Page ¹	0.951¢
Supplies Cost per Page ²	0.951¢
COMPETITIVE AVERAGE	2.307¢

¹ Based on Kyocera's suggested retail pricing and BLI's tested toner yield (an average of two toner cartridges per color) using the ISO 19752 toner yield test original.

² Based on Kyocera's suggested retail pricing for the toner cartridges and BLI's tested toner yield. The maintenance kit is included as part of the service contract.

SUPPORTING TEST DATA

Test Environment

Testing was conducted under ambient conditions of 22°C (+/-2.7°C) and 45% RH (+/-10%); monitored daily by Dickson Seven-Day Temperature/Humidity Chart Recorder, in Buyers Lab's test facility at Unit 1 Station Industrial Estate, Wokingham, Berkshire RG41 2YQ. All products lab tested by BLI are powered by dedicated circuits that are protected by ESP (Electronic Systems Protection, Inc.) surge protectors to prevent transient power and communication disturbances from impacting equipment under test.

Test Equipment

BLI's dedicated test network, consisting of Windows NT 4.0, 2000 and Microsoft Exchange servers, Windows XP workstations, 10BaseT/100BaseTX network switches and CAT5 cabling. BLI's daily test usage is designed to replicate real-world use over an eight-hour workday, and as such includes a mix of various-size documents, simplex and duplex modes, and a mix of short, moderate and long run lengths, and on/off cycles, throughout the day.

Test Duration

Products are tested for two months, three weeks of which consists of a durability test during which the product is run at half of its manufacturer-rated maximum monthly volume. BLI's daily test usage is designed to replicate real-world use over an eight-hour workday, and as such includes a mix of various-size documents, simplex and duplex modes, and a mix of short, moderate and long run lengths, and on/off cycles, throughout the day.

Tested Configuration

Base unit, plus two optional 250-sheet paper drawers and 512MB RAM Upgrade.,

Test Procedures

The test methods and procedures employed by BLI in its lab testing include BLI's proprietary procedures and industry-standard test procedures, including a BLI-developed variation of ASTM's 1318-90 Test Method for Determination of Productivity using Electrostatic Copy Machines. In addition to a number of proprietary test documents, BLI uses an industry-standard KATUN test original for evaluating black image quality and test suites from Quality Logic to evaluate applications compatibility. In addition to a visual observation, gamut size and stability are tested using a 1,400 color test target, which is read using an EFI ES-1000 color spectrophotometer and assessed using Chromix ColorThink Pro v3.0 software. In addition, density of black and color output is measured using an X-Rite 508 Densitometer.

Buyers Laboratory Inc.

Michael Danziger
CEO

Mark Lerch
COO

Anthony F. Polifrone
Managing Director

Daria M. Hoffman
Managing Editor

Lynn Nannariello
Asst. Managing Editor

Marlene Orr
Senior Printer Analyst

Tracie Hines
Associate Editor

George Mikolay
Senior Associate Editor

Carl Schell
Associate Editor

Jamie Bsales
Associate Editor

Lisa Reider
Research Editor

Marc Bussanich
Technical Analyst

Pete Emory
Manager of Laboratory Testing

Pia Beddiges
Manager of Competitive Services

Ken Nardone
Technical Manager, Field Testing

Anthony Marchesini
IT Director

T. R. Patrick
Art Director

20 Railroad Avenue ■ Hackensack, NJ 07601 ■ (201) 488-0404

CERTIFICATE OF RELIABILITY

Awarded to

KYOCERA MITA AMERICA, INC.

for the performance of the
Kyocera FS-1128MFP
in BLI's in-house durability test.


ANTHONY F. POLIFRONE
MANAGING DIRECTOR



MARCH 2010

DATE

This is to certify that when subjected to a 10,000-impression Buyers Lab durability test in a networked environment, the Kyocera FS-1128MFP proved to be a highly reliable product.

BUYERS LABORATORY INC.

THE LEADING INDEPENDENT OFFICE PRODUCTS TEST LAB AND BUSINESS CONSUMER ADVOCATE

20 RAILROAD AVENUE ■ HACKENSACK, NJ ■ 07601 ■ 201-488-0404 ■ www.BuyersLab.com

COPYRIGHT ©2010 BUYERS LABORATORY. REPRODUCED WITH THE WRITTEN PERMISSION OF BLI.