

Kyocera TASKalfa 520i

52 PPM

Copy · Print · Fax · Scan



Overall Rating	★★★★☆
Value	★★★★☆
Ease of Use.....	★★★★☆
Copy Productivity	★★★☆☆
Print Productivity	★★★☆☆
Image Quality	★★★★☆
Multitasking.....	Lab Test Report Only
Utilities	Lab Test Report Only
Reliability.....	Lab Test Report Only
Feedback to Workstations	Lab Test Report Only
Toner Yield/Costs per Page.....	Lab Test Report Only

COMPARATIVE ANALYSIS

The Kyocera TASKalfa 520i proved to be a competitive overall performer in BLI's Field Test, offering very good value, as well as good overall ease of use, earning an overall rating of Four Stars out of Five.

Replacing the Kyocera KM-5050, the TASKalfa 520i offers a faster rated speed (52 ppm versus 50 ppm), higher memory and hard drive capacities (2-GB RAM and 160-GB hard drive versus 512-MB RAM and 80-GB hard drive), as well as the ability to scan to USB. The unit features a long-life preventive maintenance schedule, meaning less frequent downtime. In addition, the TASKalfa 520i's control panel and print drivers are similar to that of Kyocera's new color MFPs, thus allowing departments to utilize both monochrome and color devices with minimal additional training needed. The control panel is highly customizable, allowing users to add up to 18 shortcuts for quick access to commonly-used selections. New to the print driver, the Quick Print tab enables users to create and save custom profiles stored as graphical icons to allow programming of complex jobs in one click. Removing misfeeds and replacing toner were also found to be simple overall.

Ratings are based upon a five-star system where five is the best.

Suggested retail price: \$11,495 base unit. (Complete specifications information for this unit, including pricing for accessories and options, is available through bliQ, at www.buyerslab.com/bliq.)

Testing method: The unit's copy/print capabilities were tested using a Windows XP workstation, connected via a gigabit Ethernet switch with CAT-5E Ethernet cables, the Kyocera print controller and Kyocera's KX print driver, which includes PCL and KPDL (PostScript emulation).

Advantages

- Very good overall value, with a price that is among the lowest for the group, along with a robust feature set and competitive overall test performance.
- Class-leading 500,000-impression preventive maintenance schedule means less downtime for the device.
- The print driver's Quick Print tab enables users to create and save custom profiles stored as graphical icons to allow programming of complex jobs in one click.
- Excellent overall ease of programming from the control panel, with the ability to add up to 18 total shortcuts to the device's core functions.
- Simple overall procedures for removing misfeeds and replacing toner.
- In addition to printing from and scanning to any USB drive right from the touch screen control panel, users can encrypt to USB, as well as apply finishing capabilities, duplex settings, image quality adjustments and pull from any tray.
- Standard Web browser access from the control panel.
- HyPAS (Hybrid Platform for Advanced Solutions) allows the TASKalfa 520i to integrate with a variety of third-party solutions.

Shortcomings

- Below average overall print and copy productivity, with well below average efficiency when printing and copying double-sided documents.
- Poor line art and halftone patterns in copy mode.
- Cumbersome procedures for switching between the PCL and PostScript emulation in the KPD L print driver, as users must right click the device in Windows' "Printers and Faxes" and close and reopen the driver for the change to take effect.
- Slightly more cumbersome for adjusting paper drawers than some competing models; the sliding metal length guides feature pegs on the underside, so users must lift the guide and slide it to the appropriate paper size, then push it down into the appropriate holes to lock into place.
- Below average standard and maximum paper capacities.

The TASKalfa 520i offers a choice of three finishers: a 3,000-sheet finisher that can be equipped with an optional hole-punch, saddle-stitching or a 7-bin mailbox; a 500-sheet internal finisher; and a 1,000-sheet multi-position finisher.

▲ VALUE ANALYSIS



The TASKalfa 520i, configured as a copier/printer with PCL and PostScript 3 printing, a saddle-stitch finisher and a reversing automatic document feeder, has a suggested retail price that is among the lowest for the group, coming in at 16 percent below the average. In fact, even if users choose the higher priced dual-scan document feeder, the TASKalfa 520i is still priced 14 percent below the average of the group. The dual-scan document feeder scans double-sided originals in a single pass and reduces wear and tear on the engine. In addition to performing competitively overall with the group in regard to ease of use, the device's rated preventive maintenance schedule, at 500,000 impressions, is the highest for the group. The model's 2 GB of memory and 160-GB hard drive are also the highest for the group. The bypass tray capacity of 200 sheets is the highest for the group as well. Rated drum and toner yield are competitive with the group. BLI rates value by evaluating a unit's SRP in relation to its overall performance, paper handling, and user and service intervention (see Advantages/Shortcomings).

▲ SUMMARY

Because of its very good value, as well as competitive overall ease of use, BLI gives the Kyocera TASKalfa 520i an overall Field Tested Rating** of Four Stars.

*** Note: The data presented in this Field Test Report was obtained from testing performed by BLI outside of our 10,000 sq. ft. test lab. BLI's Lab Test Reports contain the results of BLI's extensive in-house testing for reliability, multitasking, toner yield/cost per page and performance of additional functions and on additional platforms. Please contact BLI (phone 201-488-0404, or e-mail info@buyerslab.com) for information regarding when the Lab Test Report for this product will be available.*

▲ **Ease of Use..... ★★★★★☆**

- Control panel..... ★★★★★★
- User maintenance..... ★★★★★☆
- Print drivers..... ★★★★★☆

Control Panel

The TASKalfa 520i features a color LCD display control panel. Although there is no contrast dial, the clarity of the LCD is excellent. In addition, the control panel can be tilted to two locking positions, allowing users to view it from various lighting conditions, and also providing easy access for persons with disabilities. The Accessibility Display hard key enlarges the copy screen for users who prefer this setup, such as the visually impaired. A Help hard key is also available, and provides a fairly detailed list which can take users through various selections of the control panel. Help is available for basic copying, sending capabilities, selecting destinations from address book, printing, storing and editing a custom box document, basic scanning, selecting paper source and output, and stapling and punching. Details on troubleshooting include streaks in images, copies are too light or too dark, staple location not correct, copies are off-center, as well as 2-sided binding orientation not correct. Help is also available if images are blurry or have white spots. LED indicators notify users of the device status; solid green indicates the device is actively running a job, blinking green indicates the device is receiving information and red indicates a problem with the device.

Hard keys for Status/Job Cancel, Copy, Program, Send, Application and Document Box allow users to easily switch between the different functions of the device. The hard keys are color coded and include LED indicators that remain lit to indicate which function is in use. In addition, the control panel screen is color coded based on the function users have selected, serving as

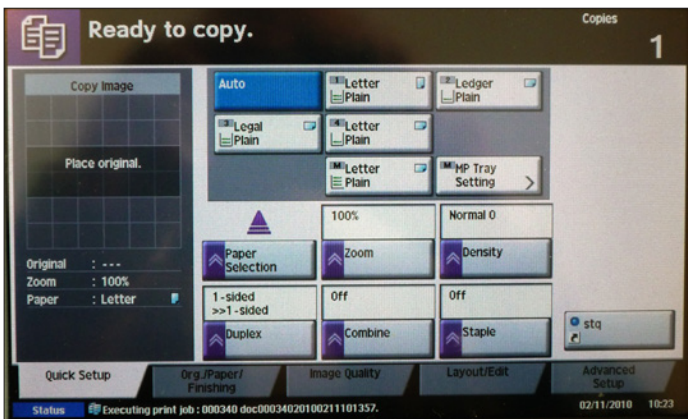


TASKalfa 520i Control Panel

an additional reference for users to know which function they are currently working in. The control panel is highly customizable via the System Menu hard key, and users can change the default screen to any of the available functions. The default screen can even be changed to the Accessibility Display. Six shortcuts can be added per core function (Copy, Send, Document Box), for 18 total. A status line on the bottom of the copy screen cycles through and informs users on the status of consumables, such as toner and waste toner container.

On the Quick Setup tab within the Copy function, a thumbnail on the left side of the screen displays the selections for the current job being programmed, including paper size, finishing and reduction/enlargement. At the default settings, most of the selections for a typical copy job can be accessed from the Quick Setup tab, including duplex, paper selection, reduce/enlarge, collate/offset and finishing options such as staple and hole punch. When one of the copy job functions is clicked on, a window pops up within the Quick Setup tab that allows users to make their selections. A More button from the pop-up windows provides additional choices, but when selected takes users away from the Quick Setup tab versus opening up another pop-up window. Users are brought back to the Quick Setup tab after pressing ok.

The Org./Paper/Finishing tab offers selections for mixed size originals, original orientation, collate/offset, staple/punch and paper output. The Image Quality tab features an eco print selection, which can be used to save toner when printing or to test copies or any other occasion where high quality print is not necessary. Also from the Image Quality tab, users can adjust the sharpness and density.



When a copy job function is clicked on, a window pops up within the Quick Setup tab that allows users to make their selections.

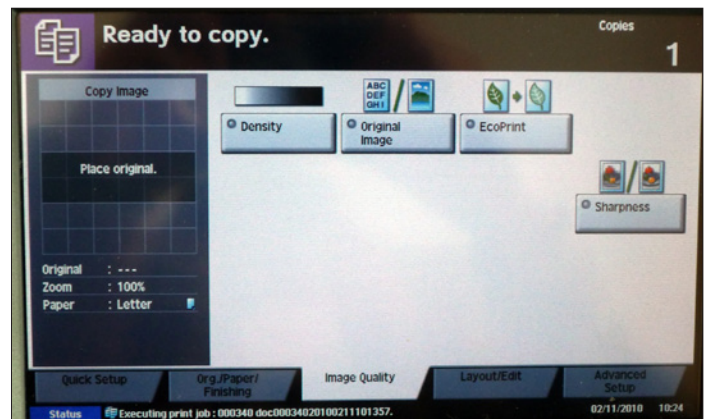
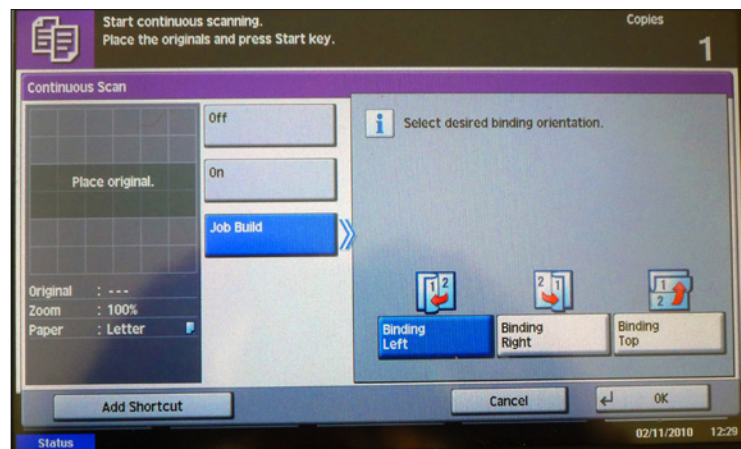


Image Quality Tab

Some advanced features available include Continuous Scan, which enables users to scan a large number of originals in separate batches and then produce them as one job. Priority Override gives a print job top priority to be completed before returning to other print jobs. This feature is also available in the job queue. Page numbers can be added to printing documents, and users can print front covers or front and back covers. Users can print on different types of paper using different paper sources. Memo pages can also be created within copies for writing comments. Users can reserve half of a page for memo space, and can also copy two pages of an original to one page.



Continuous Scan enables users to scan a large number of originals in separate batches and then produce them as one job.

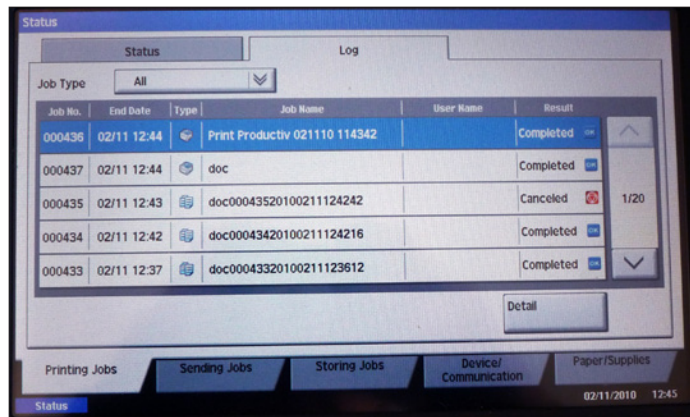
At the right of the panel is the USB port and when inserted, a menu is launched that can automatically bring the user to the Removable Memory tab (see the scanner section for more on this capability). Kyocera's Document Box allows users to securely print and store jobs on the device and output them when needed. It offers long-term job storage, and is also where users can access the host USB interface. Other capabilities of Document Box include proof and hold from printing and private print to custom box with access codes.

Via the Application hard key, users can access Kyocera's document workflow solutions such as KYOcapture and KYOcapture Express, which integrate with many of the industry's leading document management systems, including SentryFile, Laserfiche, Documentum and Microsoft SharePoint (see scanning section for more on this). The new Web browser is also accessible from the Application hard key, and will play a part as the company expands its new HyPAS (Hybrid Platform for Advanced Solutions) platform for third-party applications. The Web browser does not allow for printing.

When users select the Status/Job Cancel hard key and then the Paper/Supplies tab, detailed information on toner and paper supplies is provided. Details include percent full for toner and paper in 10 percent increments, as well as the status of the waste toner container and size and type of paper

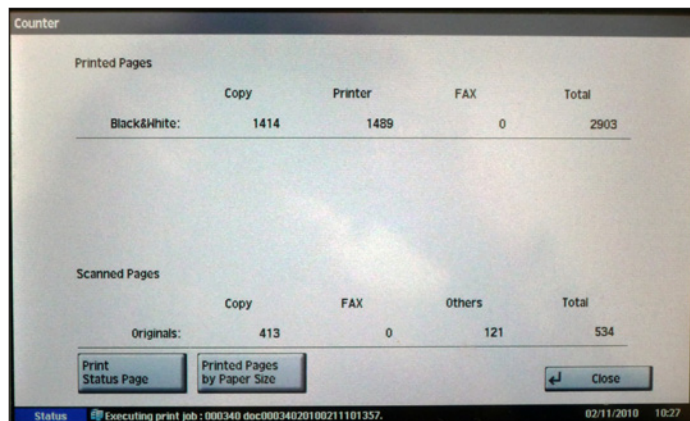
loaded in each tray. Details on staple and punch waste are also provided. The Program function allows users to edit and register stored programs. Up to 50 are available.

The Status/Job Cancel is also where the job queue is located. The job queue indicates the number of originals in copy and print jobs and counts up as pages and sets are copied and printed. It does not identify the user when printing. It does indicate when jobs are complete or incomplete, and allows users to move jobs up and delete jobs.



Job Queue

A dedicated Counter hard key breaks down copies and prints produced by copy, print, fax and total. Scanned pages produced are broken down by copy, fax, others and total. The counter also provides a breakdown of printed pages by paper size. The counter information can be printed, and the printed page is in color and in addition to counter details offers toner gauges, network settings and paper usage breakdown. The device’s serial number is not provided, however.



Meter Counter

Throughput Capabilities and Materials

Standard paper supply	Sources	2
	Total capacity	1,000 sheets
	Paper sizes	5.5" x 8.5" to 11" x 17"
	Weights	12 to 28 lbs.
Bypass	Capacity	200 sheets
	Paper sizes	5.5" x 8.5" to 11" x 17"
	Weights	12-lb. bond to 110-lb. index
Document feeder (optional RADF or DSPF)	Capacity	100 sheets
	Paper sizes	5.5" x 8.5" to 11" x 17"
	Weights	9 to 42 lbs.
Maximum paper supply	Sources	5
	Total capacity	4,200 sheets
	Paper sizes	5.5" x 8.5" to 11" x 17"
	Weights	12-lb. bond to 110-lb. index

User Maintenance

The TASKalfa 520i comes with dual 500-sheet drawers and a 200-sheet bypass tray for a standard paper capacity of 1,200 sheets, which can be upgraded to 4,200 sheets with the addition of a 3,000-sheet large capacity tray. While the standard paper drawers accept paper weights from 12 to 28 lbs., the bypass tray handles up to 110-lb. index. Users can choose either the 100-sheet dual-scan document feeder or the 100-sheet reversing automatic document feeder and have the flexibility to upgrade the document feeder as their business needs evolve. The former duplexes in a single pass, saving wear and tear on the engine. Both the dual-scan document feeder and reversing automatic document feeder scan simplex originals at 75 ipm at 300 dpi. The dual-scan document feeder scans duplex originals at 100 ipm at 300 dpi, whereas the reversing automatic document feeder scans duplex originals at 45 ipm.

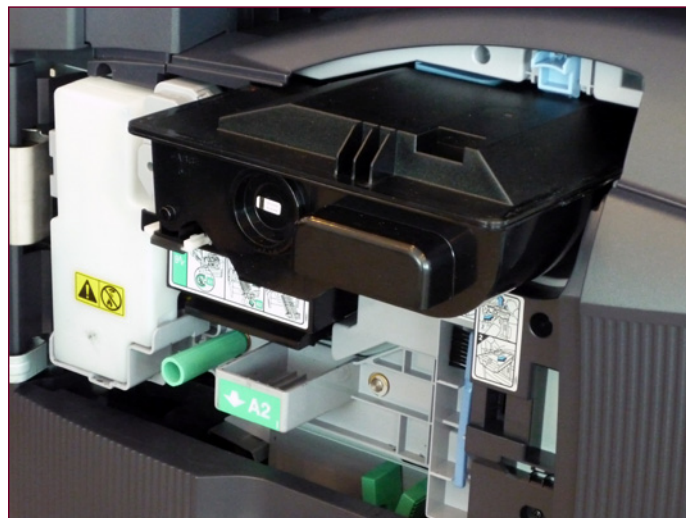
Adjusting the paper drawers is simple overall, but slightly more cumbersome than some competing models. The width guides are adjusted and locked into place via a spring-loaded lock built into the guide. The sliding metal length guides feature pegs on the underside, however. Thus, users must lift the guide and slide it to the appropriate paper size, then push it down into the appropriate holes to lock into place, which is more cumbersome than some competing models. The drawers do feature automatic paper sensors and therefore no confirmation is needed at the control panel, which is a plus. The bypass tray also automatically detects paper size when paper is pushed against the sensor.

Removing misfeeds was very simple overall. The graphical display is dynamic and walks users through the process. The text on screen was easy to understand and the graphics were very clear. In addition, LEDs outside the panels and inside the machine accurately guide the users to the misfeed locations. The indicators clear as misfeeds are removed. please confirm, carry over from color TASKalfa devices.



Misfeed Instructions

Replacing toner is also very simple overall. Users need only to release the latch and pull out the toner from the front of the machine. While the toner and waste tanks are user replaceable, a service call is required to replace the drums.

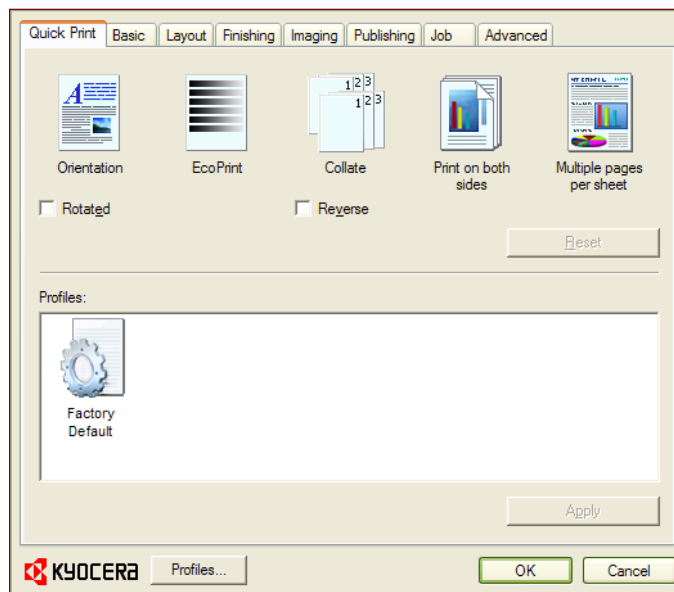


Replacing Toner

Print Drivers

The print controller features a 600-MHz processor, along with the KX driver, which offers users switchable PCL 6 and PostScript 3 emulation (PDF is also available). XPS printing is available via a separate driver. Although the KX driver encompasses three different PDL versions that are identical in appearance and layout, at first it may be confusing to the user how to access the different versions. For example, if users want to print in PostScript emulation, they must right-click the device in “Printers and Faxes” in Windows and select “Properties.” Then they must also select the Device Settings tab within “Properties,” then “PDL,” which launches a “PDL Settings” dialog box. From the dialog box, users select the drop-down menu and then select the driver they wish to print with. Also within the PDL Settings dialog box is a selection for GDI compatible mode. Users should note, too, that when they change the driver selection in the dialog box, they must close the driver and reopen it for the change to take effect. By selecting the “Auto Configure tab in Device Settings” in Windows, the drivers automatically detect and display the device’s configuration, eliminating the need for an administrator to manually specify this information.

Overall, the KX driver was found to be easy to understand and simple to use. New to the device, the Quick Print tab allows users to select commonly used print features, such as Orientation, Collate, Print on both sides and Multiple pages per sheet. In addition, the Quick Print tab enables users to create and save custom profiles stored as graphical icons to allow programming of complex jobs in one click. Other advanced features include Eco Print, which allows users reduce the amount of toner per job. Eco Print can also be set as the default setting. The Profiles button allows users to create and import commonly used settings for print jobs.



Quick Print Tab

Most of the features required for a typical print job are available from the Basic tab, including paper selection and source, duplex, collate sets and quantity. While the tab is graphical, they do not feature a point-and-click interface or consumables feedback. Selecting paper source and destination is done using pull-down menus located at the top half of the Basic tab. The bottom half of the tab includes the selections for duplex, quantity and collate, as well as orientation, color and Eco Print. There is a job review pane to the left of the driver that shows the majority of selections that a user has made for a print job, including source, destination, orientation, copies, pages per sheet, poster, scaling and finishing options.

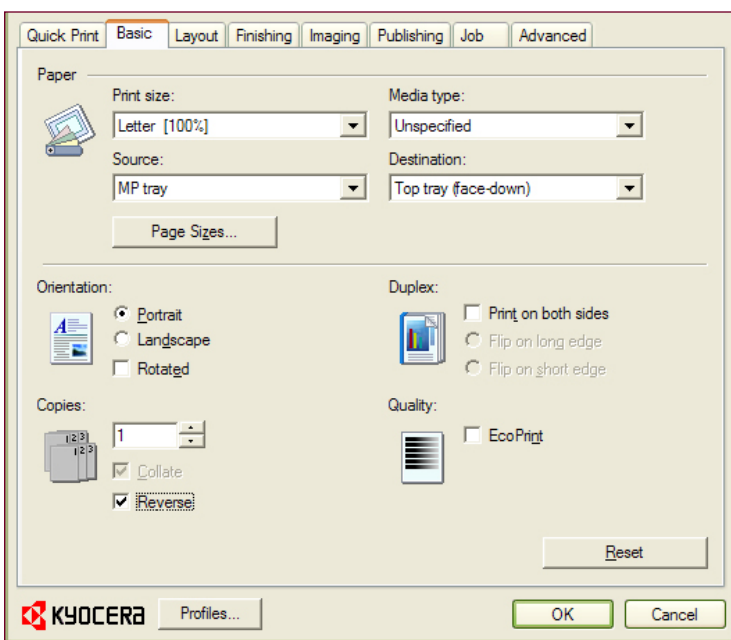
The Layout tab contains selections for booklet printing, multiple pages per sheet, poster and scaling. Pages per sheet can be set at two, four, six, nine, 12, 16, or 25. For poster settings, users can opt to overlap edges, print crop marks, or print assembly marks. Print formats available include Poster Pages, Proof Sheet, or Poster Pages and Proof Sheet.

The Finishing tab includes finishing edge and staple settings. The Imaging tab allows users to set the print quality to either High or Custom, which makes the eco print capability available. From the driver's Publishing tab, users can select cover mode and insert either front covers or both front and back covers. Users can also easily select to print onto the front outside, front inside, back inside or back outside.

The specified media for covers can be selected from a pull-down menu. Page inserts and transparencies can also be included in jobs. Up to three paper sources can be used per print job.

The Job tab features selections for quick copy, proof and hold, private print, job storage and custom box. Custom box allows a user to type a job name up to 79 characters for job storage, making it easy for a user to identify their job.

The Advanced tab features selections for watermarking and Prologue/Epilogue, which allows users to insert macros into specific locations in a print job. On the Advanced tab of the print drivers is the Status Monitor button, which displays an image of the device in the right-hand side of the screen along with a pop-up message, such as "Paper Low in Cassette 1." Users can hide the image by right clicking and selecting "Hide the Status Monitor."



Basic Tab of KX Driver

▲ **Copy Productivity** ★★★★★☆☆

First-copy time.....★★★★★

Copy efficiency.....★★☆☆☆☆

First-Copy Time

The TASKalfa 520i's first-copy time is among the fastest for the group from the platen, at 3.6 seconds, and is competitive from the document feeder, at 5.7 seconds.

First-copy time measures the time it takes for the first copy to be produced after the Start button is pressed. The test is conducted using BLI's test original with 6% page coverage, using normal contrast and standard resolution and with all auto features off.

First-Copy Time (in seconds)

	TASKalfa 520i	COMPETITIVE UNITS	
		Fastest	Slowest
Platen	3.6	3.5	8.4
Document feeder	5.7	5.2	9.4

Copy Efficiency

The TASKalfa 520i's copy efficiency is competitive with the group in 1:1 mode, at 85.0%, but well below average in 1:2 and 2:2 modes, at 51.8% and 51.5%, respectively.

BLI tests a unit's copy efficiency (the percentage of the rated speed at which the unit operates when producing real-world jobs) by making one, five, 10 and 20 sets of a 10-page document in three copy modes: 1:1, 1:2 and 2:2. BLI obtains the overall efficiency for each copy mode by averaging the efficiency ratings (derived by dividing the tested speed of the device by the rated speed and then multiplying by 100) for each run length. The closer the rate is to 100%, or if it exceeds 100%, the more efficient the unit.

Booklet Copy

The unit's efficiency when producing 10 sets of a 16-page document output in booklet mode is 41.4%, which is the lowest for the group. It completed the job in 7 minutes and 25.52 seconds, running at 21.5 cpm. The closer the efficiency rate is to 100%, or if it exceeds 100%, the more efficient the unit.

▲ **Print Productivity** ★★★★★

- Print efficiency ★★☆☆☆
- Job stream ★★★★★

Print Efficiency

The TASKalfa 520i’s print efficiency is competitive with the group in simplex mode, at 82.1%, but below average in duplex mode, at 52.2%.

BLI tests a unit’s print efficiency by printing one, five, 10 and 20 sets of a 10-page document. Print jobs are sent using the PCL driver at 600-dpi resolution. BLI obtains the overall efficiency for each print mode by averaging the efficiency ratings (derived by dividing the tested speed of the device by the rated speed and then multiplying by 100) for each run length. The closer the rate is to 100%, or if it exceeds 100%, the more efficient the unit.

Booklet Print

The unit’s efficiency when printing 10 sets of a 16-page Acrobat PDF file output in booklet mode from the PCL driver is 41.5%, which is the lowest for the group. It completed the job in 7 minutes and 24.50 seconds, running at 21.6 ppm. The closer the efficiency rate is to 100%, or if it exceeds 100%, the more efficient the unit.

Job Stream

The TASKalfa 520i’s efficiency rate when printing BLI’s job stream from the PCL driver is competitive with the group, at 66.8%. It completed the job stream in 32.81 seconds, running at 34.7 ppm. The model’s efficiency rate when using the PostScript driver is slightly below average for the group, at 47.8%. It completed the test in 45.84 seconds, running at 24.9 ppm.

BLI’s job stream includes Word documents, Outlook e-mail messages, Excel spreadsheets, PowerPoint, HTML and Acrobat PDF files. This test simulates the type of traffic a typical device might experience in a real-world, multi-user environment. All of the files are sent to the printer as a group, at which time the stopwatch begins; timing ends when the last page of the last file exits the device. Job stream efficiency is determined by the percentage of the rated speed at which the unit operates when producing real-world jobs. The closer the rate is to 100%, or if it exceeds 100%, the more efficient the unit.

▲ IMAGE QUALITY



Copy

Text was rated fair. Although text was fully formed and darkness and smoothness were average, sharpness was below average, and toner overspray was evident with and without magnification. Line art was rated poor. While circles were fully formed overall and consistency of lines was average without magnification, line consistency was below average under magnification. Fine line distinction was average without magnification but below average under magnification. A jitter line was also found. Halftone range was fair. While grayscale visible from 15% (which is the minimum coverage level of the original) to 100%, there was little distinct separation between levels. Halftone patterns were grainy, with banding evident. Solids were good, with average darkness and consistent coverage overall.

Print

Text was rated good. Text was fully formed, darkness was above average, and sharpness and smoothness were average. Toner overspray was evident with and without magnification. Line art was also good. Circles were fully formed, and distinction of fine lines and consistency of line thickness were average with and without magnification. Halftone range was good, with grayscale visible from 3% to 100% and distinct separation between all levels. Levels 1 to 3 were blank, however. Halftone patterns were grainy, with minimal banding evident. Solids were good, with above average darkness. Consistency of coverage was below average, however.

MULTITASKING

Reserves

The TASKalfa 520i allows users to reserve additional copy jobs while a print or copy job is in progress. The number of reserves available is limited only by the memory of the device.

Interrupt

To pause a job in progress in order to perform an immediate copy job, the user selects the Interrupt hard key on the control panel and is able to access most features required for a typical copy job. During testing, this unit automatically returned to non-interrupted print and/or copy mode within approximately 1 minute and restarted the job that was interrupted without user intervention. This would be beneficial in a networked environment where many jobs would likely be waiting in the queue. Some other units do not automatically return to non-interrupted mode; others return to non-interrupted mode but do not restart the interrupted job until the Start key is pressed.

OTHER FEATURES

Scan

Standard scanning capabilities include speeds up to 75 ipm in both color and black. Scan destinations include e-mail, folder, FTP and USB, as well as WSD scanning (Windows Vista) and TWAIN scanning. Users can scan at resolutions from 200 to 600 dpi. High compression and encryption of scanned PDFs is also standard. The quick search key allows for quick and easy searching through the programmed destinations, as users can simply enter the numeric code associated with the destination. The device holds up to 1,000 destinations. Auto detect USB automatically takes users to the Removable Memory tab under Document Box when a USB is inserted into the device. Users can print from and scan to any USB drive right from the touch screen control panel in PDF, JPEG, TIFF and XPS file formats. Users can encrypt to USB as well. From the host USB, users can also apply finishing capabilities, duplex settings, image quality adjustments and pull from any tray.

The TASKalfa 520i comes with standard Nuance PaperPort for managing and scanning documents. The optional KYOCapture solution is a server-based document capture application that allows users to create a rules-based workflow capture, process and route hardcopy and electronic documents. The application is integrated with the device and makes it easy for users familiar with copier operation to apply indexing information to scanned documents before sending them to different business applications. It also integrates with many of the industry's leading document management systems, including SentryFile, Laserfiche, Documentum and Microsoft SharePoint.

Fax

Faxing features include a 33.6-Kbps modem and JBIG compression. Additional fax functions include Duplex TX/RX and Confidential RX/TX. Up to two G3 fax systems can be added as well. Fax memory is 12 MB standard and 120 MB maximum.

Security and Regulatory Compliance

In addition to an optional Data Security Kit that will be submitted for Common Criteria certification at EAL level 3, other security features include Secure Print and Virtual Mailbox, which require users to enter passwords to enable output directly at the device. Users can also add a Security Watermark to their documents to deter unauthorized copying. The optional Printed Document Guard kit feature prevents the unauthorized printing, copying, scanning and faxing of documents from Kyocera devices. For example, if a user prints a document with the Document Guard feature enabled, and then tries to scan it, the scan will not go through. If the same document is copied, the user will get a blank page. The server-based PrintQ Manager Secure Job Release allows users to access their secured documents stored at a server from any PrintQ-enabled TASKalfa MFP. The network interface is also IPv6-compliant.

The control panel can be tilted and the easy-to-access paper drawers aid in 508 compliance. The copy screen can be enlarged for the visually impaired. The open access restriction on the document feeder ensures that the document feeder will not fall.

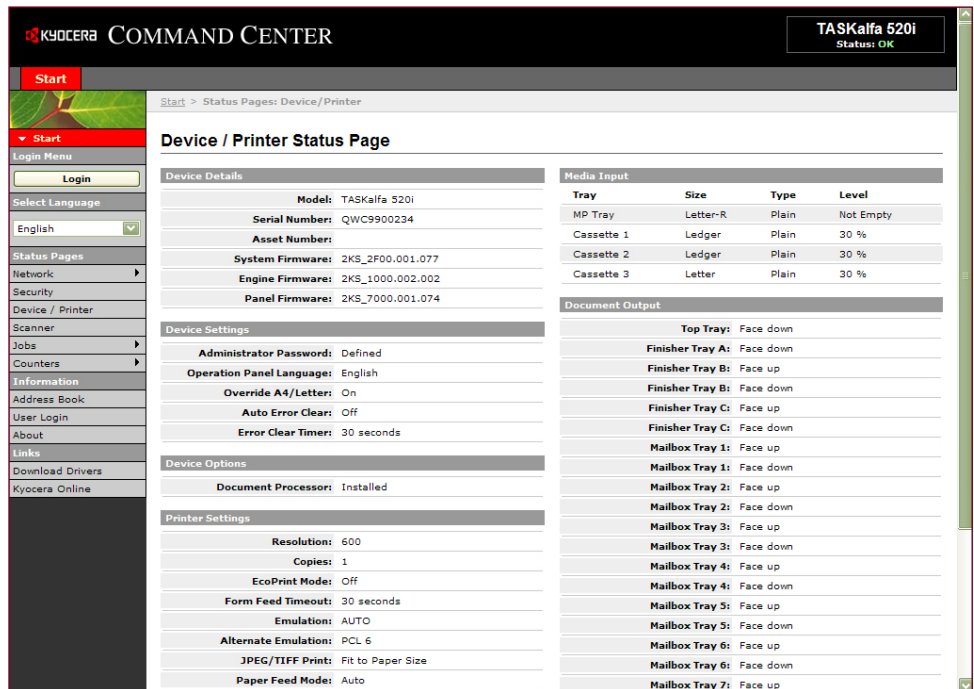
In addition to using a long-life drum, the device is Energy Star- and RoHS-compliant. Additional environmental features include a warm-up time of 30 seconds or less, sleep mode, duplex and combine copy modes, low noise levels and minimal ozone emissions, according to Kyocera. Kyocera was also awarded the 2008 Excellence in Partnership (EIP) award for Industry Green Contractor from the U.S. government's General Services Administration (GSA) in recognition for its environmental commitment. In addition, the company's U.S. facility's Environmental Management System (EMS) has achieved ISO14001:2004 certification.

Administrative Utilities

The TASKalfa 520i utilizes Kyocera's Command Center, which can be accessed from any Web browser. Once an IP address is assigned to the device, the browser can view the configuration page. This page is divided into various layers for easy administration and can be secured with a password to limit access. From the Command Center, a network administrator can apply any network or device setting, including Simple Network Management Protocol (SNMP) or Simplified Mail Transfer Protocol (SMTP).

KMnet Viewer is an advanced network management software tool that is compatible with all Kyocera MFPs and printers. The settings of all printers on the network can be checked visually and amended from any Windows PC. Further, KMnet Viewer acts as a real-time, early warning system by sending e-mail messages on the machine status, as well as when toner and paper are low. Administrators can also opt for audio or pop-up notification. Filters also allow administrators to see which devices have errors.

Also available is PrintQ Manager, a device management solution that incorporates print queue monitoring and server-based security for output of documents. The device also features KMnet for Accounting, which allows administrators to manage cost control directly from their desktops.



KYOCERA COMMAND CENTER TASKalfa 520i
Status: OK

Start > Status Pages: Device / Printer

Device / Printer Status Page

Device Details		Media Input			
Model:	TASKalfa 520i	Tray	Size	Type	Level
Serial Number:	QWC9900234	MP Tray	Letter-R	Plain	Not Empty
Asset Number:		Cassette 1	Ledger	Plain	30 %
System Firmware:	2KS_2F00.001.077	Cassette 2	Ledger	Plain	30 %
Engine Firmware:	2KS_1000.002.002	Cassette 3	Letter	Plain	30 %
Panel Firmware:	2KS_7000.001.074	Document Output			
Device Settings		Top Tray: Face down			
Administrator Password:	Defined	Finisher Tray A: Face down			
Operation Panel Language:	English	Finisher Tray B: Face up			
Override A4/Letters:	On	Finisher Tray B: Face down			
Auto Error Clear:	Off	Finisher Tray C: Face up			
Error Clear Timer:	30 seconds	Finisher Tray C: Face down			
Device Options		Mailbox Tray 1: Face up			
Document Processor:	Installed	Mailbox Tray 1: Face down			
Printer Settings		Mailbox Tray 2: Face up			
Resolution:	600	Mailbox Tray 2: Face down			
Copies:	1	Mailbox Tray 3: Face up			
EcoPrint Mode:	Off	Mailbox Tray 3: Face down			
Form Feed Timeout:	30 seconds	Mailbox Tray 4: Face up			
Emulation:	AUTO	Mailbox Tray 4: Face down			
Alternate Emulation:	PCL 6	Mailbox Tray 5: Face up			
JPEG/TIFF Print:	Fit to Paper Size	Mailbox Tray 5: Face down			
Paper Feed Mode:	Auto	Mailbox Tray 6: Face up			
		Mailbox Tray 6: Face down			
		Mailbox Tray 7: Face up			

Kyocera Command Center