



TASKalfa 300i | Black & White Multifunctional System

EVERY DOCUMENT. EVERY TASK. EVERY TIME.



# TASKalfa 300i MFP:

The **Kyocera TASKalfa 300i Black & White multifunctional system** encompasses the **ultra-reliability, unsurpassed performance and space-saving design**. At a productive output speed of 30 pages per minute, the TASKalfa 300i delivers crisp black & white output, brilliant color, and embedded HyPAS, Kyocera's powerful and scalable software solutions platform, the TASKalfa 300i provides you with maximum performance and reliability for any office environment, that's the Kyocera TASKalfa 300i.

## AWARD-WINNING RELIABILITY YOU CAN DEPEND ON

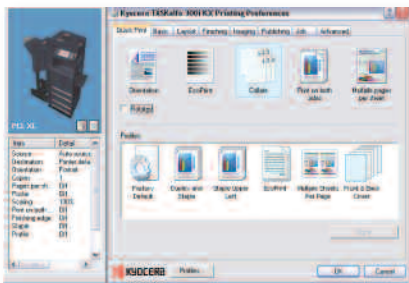
The reliability factor sets Kyocera apart from the competition. Kyocera MFPs are consistently recognized by industry analysts and users for their long life consumables and components, as well as unsurpassed maintenance intervals.

- Technologically enhanced **long life consumables** reduce the frequency of major component replacement and downtime.
- With yields of 300,000 pages, our **industry-leading preventive maintenance intervals** and **patented Amorphous Silicon drum technology** deliver a durable imaging system day-in and day-out.
- A high **100,000 page maximum monthly volume** ensures work environments can meet critical demands and deadlines efficiently.

Your business is a top priority and you demand uncompromising dependability across your entire enterprise. The TASKalfa 300i delivers a winning solution for all your critical document imaging requirements. **It's ultra-reliability at its best!**

## POWER AT THE DEVICE AND AT THE DESKTOP

Kyocera's advanced **KX Driver** allows users to access the unique features integrated into each TASKalfa MFP from one common print driver.



## Productive Reversing Automatic Document Processor

With scan speeds up to 50 images per minute (300 dpi B&W), the optional reversing automatic document processor can maximize your office productivity while handling mixed originals with ease.

## Enhanced Productivity

An impressive, standard 2GB of RAM and 160GB Hard Disk Drive maximize your document processing and ensure all of your output requirements are handled quickly and efficiently.

## Internal Finisher

This optional space-saving finisher has a 500 sheet stack capacity and 30 sheet staple capacity designed to handle any workgroup's basic finishing requirements.



## Robust 1,000 Sheet Finisher

This optional robust finisher supports multi-position stapling and a variety of paper weights and sizes for all of your evolving finishing needs.



## CREATING PROACTIVE BUSINESS SOLUTIONS WHILE WORKING TO KEEP THE PLANET GREEN

Kyocera is committed to pursuing a harmonious balance between economic development and environmental protection. Our Environmental Action Plan in developing office solutions with environmentally friendly and superior energy- and resource-efficient products.

- Long Life Components and Consumables
- Energy Star Compliant
- Restriction of Hazardous Substances (RoHS) Compliant
- Fast Warm-up Time



**TASKalfa** 

Kyocera Mita America was awarded the Excellence in Partnership award for Industry Green Contract recognition for its environmental commitment. The GSA Integrated Workplace Acquisition Center awarded Kyocera with the Evergreen Award as an environmentally conscious business with strong efforts in our U.S. facility's Environmental Management System has achieved ISO14001:2004 certification, and our activities, products and services impact the environment.

# Productivity, Reliability, Flexibility

Performance and proven technology that you demand for your advanced document imaging needs, all in a sleek, compact design. Capable of high-resolution scans in both full color and black & white, and optional fax/network fax. Engineered with Kyocera's unique long-life technology and seamless integration with widely accepted software applications for virtually any business environment. Exceptional document



## Wide 8.5" Color Touch Screen Control Panel

The user-friendly color touch screen control panel provides robust document handling and ease of use at your fingertips.

## Advanced USB Host Interface

Conveniently print-from (black & white) and scan-to (color or black & white) any USB drive right from the touch screen control panel in PDF, JPEG, TIFF and XPS file formats.

## Efficient Duplex and Paper Handling

Standard stackless duplex combined with a maximum 2,200 sheet paper capacity (statement to ledger) gives you the flexibility to satisfy all your print and copy needs.

## Optional Fax

Add the optional Super G3 fax system and optional Internet fax for a space-saving footprint. Standard multi-send features combine fax and scanning for a truly efficient communication device.



## HIGH END PERFORMANCE & DESIGN

- **Color Scanning.** With resolutions of up to 600 x 600 dpi and multiple file formats supported including PDF, JPEG, TIFF, and XPS, your color scanned documents will remain true to the original.
- **High Capacity Toner.** The TASKalfa 300i utilizes a high capacity toner, eliminating the need for frequent replacement. At an impressive yield of 20,000 pages (based on 6% coverage), your business will realize the highest in performance standards.
- **Section 508 Compliance.** To meet the accessibility needs of individuals with disabilities, the TASKalfa 300i is equipped with an array of features including a large, easy-to-view color display, an adjustable control panel, visual and audible alerts, and easy-to-access paper drawers.
- **HyPAS.** Kyocera's Hybrid Platform for Advanced Solutions, or HyPAS, will allow your business to further optimize the TASKalfa 300i with powerful integrated solutions designed to boost your business activities. HyPAS delivers a broad range of options that enable the TASKalfa 300i to seamlessly integrate with widely accepted software applications and operate in virtually any environment.

## THE FUTURE GREEN

Environmental preservation. We adhere to the goals of our worldwide Environmental and supply-saving features, without compromising your productivity.

- Power-Saving Sleep Mode
- Duplex and Combine Copy Modes
- Low Noise Levels
- Minimal Ozone Emissions

Award from the U.S. Government's General Services Administration in the category of technologies and electronics, also recognized for its commitment to recycling, affirmative procurement, and waste reduction. Additionally, the award distinguishes corporations that effectively manage how their

# HyPAS™



**TASKalfa**  
300i



Shown with optional RADF,  
500 x 2 Tray, and  
1,000 Sheet Finisher  
46.6" W x 25.5" D x 45.75" H



Shown with optional RADF,  
500 x 2 Tray, and  
Internal Finisher  
34.4" W x 25.5" D x 45.75" H



The TASKalfa 300i features  
high capacity toner rated for  
20,000 pages  
(6% coverage)



Color Touch  
Screen Control Panel  
Screen Dimensions:  
8.5 inches

**HyPAS™**

Hybrid Platform for  
Advanced Solutions

### Basic Specifications

Configuration	Black & White Multifunctional System - Print/Scan/Copy/Optional Fax
Pages Per Minute	Letter: 30 ppm / Legal: 15 ppm / Ledger: 15 ppm
Warm-up Time	29 Seconds or Less
First Copy Out Time	5.1 Seconds
Resolution	600 x 600 dpi
Memory / Hard Disk Drive	2 GB RAM / 160 GB HDD
Duplex	Standard Stackless, Statement to Ledger, 16 - 20 lb Bond
Electrical Requirements / Weight	120V, 60Hz, 11.8A / 165.4 lbs (mainframe only)
Maximum Monthly Volume	100,000 Pages per Month

### Paper Supply

Standard Paper Sources	Dual 500 Sheet Universal Drawers, 200 Sheet MPT; Auto Selection/Switching, Add Paper While Running
Optional Paper Sources	Dual 500 Sheet Universal Drawers PF-680
Paper Capacity	Standard: 1,200 Sheets; Maximum: 2,200 Sheets
Paper Size	5.5" x 8.5" - 11" x 17" (Statement to Ledger)
Paper Weight	16 - 32 lb Bond ; MPT: 12 lb Bond - 110 lb Index
Input Materials	Bond Paper, Recycled Paper, Transparencies, Cardstock, Envelopes

### Printer Specifications

Controller	PowerPC 750FL / 600MHz
PDLs / Emulations	PRESCRIBE, PCL6 (5e, XL), KPDL3 (PS3)
Fonts	136 KPDL3, 93 PCL6, 8 Windows Vista, 1 Bitmap
Windows OS Compatibility	Windows 2000/XP/2003/Vista/2008/Windows 7
Novell OS Compatibility	Novell NetWare 3.x/4.x/5.x/6.x
MAC OS Compatibility	Mac OS 10.x
UNIX OS Compatibility	Sun OS 4.1.x; Solaris 2.x; AIX; HP-UX (LPR)
Interfaces	Standard: 10/100BaseTX, Hi-Speed USB 2.0, USB Host Interface, 2 Expansion Slots
Network Print and Supported Protocols	TCP/IP (IPv4, IPv6, SSL, HTTPS), IPX/SPX, AppleTalk, NetBEUI
Drivers	KX Driver, Mini Driver, KX Driver for XPS, XPS Mini Driver, Network Fax Driver, PPD for MAC
Utilities	PDF Direct Print, KMnet Admin, KMnet for Accounting, KMnet Viewer

### Scan Specifications

Scan Resolutions	200, 300, 400, 600 dpi
File Formats	Black: PDF, TIFF; Color: PDF, TIFF, JPEG, XPS
PDF Extension	High Compression PDF, Encrypted PDF
Connectivity / Supported Protocols	10/100BaseTX / TCP/IP
Scanning Functions	Scan to SMB, Scan to e-Mail, Scan to FTP, Scan to USB, WSD Scan, TWAIN Scan

### Copy Specifications

Image Mode	Text, Photo, Text/Photo, Auto, Manual, Map
Continuous Copy	1 - 999 / Auto Reset to 1
Additional Features	Positive/Negative Reverse, Mirror Image, Rotate Copy, Border Erase, Split Copy, Electronic Sort, Margin Shift
Job Management	Job Interrupt, Job Build, 50 Job Programs, Repeat Copy, 1,000 Department Codes
Magnification / Zoom	Full Size, 5 Reduction, 5 Enlargement Preset Ratios, 25 - 400% in 1 step increments, XY Zoom
Document Box	Custom Box, Job Box, Removable Memory Box, Fax Box (with optional Fax System)

### Fax Specifications

Fax / Network Fax Option	Fax System(S)B / Internet Fax Kit(A) (requires Fax System(S)B)
Compatibility	Super G3 Fax
Fax Memory	Standard: 12 MB; Maximum: 120 MB
Fax Functions	Duplex TX/RX, Confidential RX/TX, F-Code RX/TX, Broadcasting, Fax Box, Fax Block, Dual Fax

### Optional Document Processor DP-670(B)

Type / Capacity	Reversing Automatic Document Processor / 75 Sheets
Scan Speed	Simplex: 50 ipm / Duplex: 15 ipm (300 dpi B&W)
Acceptable Originals / Weights	5.5" x 8.5" - 11" x 17", Mixed Size Originals / 12 - 43 lb Bond

### Optional 1,000 Sheet Finisher DF-780(B)

Stack / Staple Capacity	1,000 Sheets; 50 Sheets: 8.5" x 11"; 30 Sheets: 8.5" x 14", 11" x 17"
Paper Size / Weight	8.5" x 11" - 11" x 17" / 16 - 34 lb Bond
Edge Staple Position	3 Position: Top Left, Bottom Left, 2 Point Long Edge

### Optional Internal Finisher DF-670(B)

Stack / Staple Capacity	500 Sheets; 30 Sheets: 8.5" x 11"; 20 Sheets: 8.5" x 14", 11" x 17"
Paper Size / Weight	8.5" x 11" - 11" x 17" / 16 - 32 lb Bond
Edge Staple Position	1 Position

### Additional Options

KYOcapture, KYOcapture Express, Fax Memory, Platen Cover, Job Separator (**JS-670(B)**), Attachment Kit (**AK-670**), Stand;  
Data Security Kit (E) - Security Overwrite and Encryption; Printed Document Guard Kit (A)

Specifications and design are subject to change without notice.  
For the latest on connectivity visit [www.kyoceramita.com](http://www.kyoceramita.com)  
All trademarks are the property of their respective owners.

**KYOCERA**

Kyocera Mita America, Inc. Headquarters: 225 Sand Road, Fairfield, NJ 07004-0008, USA  
©2009 Kyocera Mita America, Inc.

IC# 855D400254



**PowerPC™**

